

TRASH TO TREASURE : BIN REWARDS TRANSFORMING WASTE DISPOSAL INTO A REWARDING EXPERIENCE

Sanjay Gandhi S¹, Sanjay Kumar M², Monish Kumar A³, Vetri Selvan M. M.E.⁴,

^{1,2,3} Students, and ⁴ Faculty

Dept. of Artificial Intelligence and
Data Science Engineering,
Panimalar Engineering College,
Chennai, India.

gandhisanjay060@gmail.com

Abstract: This research paper delves into the creation and deployment of an innovative waste management system designed to incentivize responsible waste disposal behaviors. Leveraging advancements in technology such as AI-driven algorithms, smart sensors, and user-friendly interfaces, the system aims to streamline waste collection processes while fostering environmental consciousness among users. Through the implementation of diverse reward options and community engagement strategies, individuals are encouraged to actively participate in waste reduction initiatives. By integrating user feedback and continuously refining system functionalities, this approach seeks to promote sustainable waste management practices and contribute to the creation of cleaner, greener communities.

Keywords: incentives for trash management, qr codes, waste segregation, rewards, community involvement, environmental impact, economic feasibility, technological integration, gamification, responsible waste disposal, sustainability, machine learning, data analytics.

1.

INTRODUCTION:

Waste management stands as a critical global challenge in the 21st century, with burgeoning populations and industrial activities contributing to an exponential increase in waste generation. From household refuse to industrial byproducts, the sheer volume and diversity of waste pose multifaceted challenges to communities and ecosystems worldwide. Improper waste disposal not only pollutes the environment but also jeopardizes public health, exacerbates resource depletion, and amplifies the risk of natural disasters such as floods and wildfires. Moreover, the economic burden of waste management, including collection, transportation, and disposal, strains municipal budgets and inhibits sustainable development efforts. Despite various regulatory frameworks and waste management strategies, many regions grapple with inadequate infrastructure, insufficient funding, and lack of public awareness and participation. As such, there is an urgent need for innovative and comprehensive approaches to address the complex challenges of waste management, safeguarding both present and future generations against the adverse consequences of unchecked waste accumulation. This research paper aims to explore one such innovative approach: incentivized waste management, which harnesses the power of rewards to incentivize responsible waste disposal practices and foster environmental stewardship.

The emergence of incentivized waste management solutions marks a significant shift in traditional waste management paradigms. Recognizing the limitations of punitive measures and voluntary participation campaigns, incentivized approaches leverage positive reinforcement to encourage individuals and communities to adopt sustainable waste disposal behaviors. This evolution reflects a growing recognition of the importance of engaging and empowering stakeholders in the waste management process, moving beyond mere compliance towards active participation and ownership. Incentivized programs not only incentivize recycling and proper waste disposal but also foster a sense of collective responsibility and environmental

consciousness among participants. By aligning economic incentives with environmental objectives, these solutions hold promise for promoting lasting behavior change and achieving tangible environmental and social outcomes. This paper aims to delve deeper into the mechanisms, effectiveness, and potential implications of incentivized waste management programs, shedding light on their role in shaping the future of waste management practices.

An overview of existing reward systems in waste management reveals a diverse landscape of incentive-based approaches aimed at promoting responsible waste disposal behaviors. These systems vary in scope, ranging from simple point-based reward schemes to more sophisticated gamified platforms integrated with mobile applications and IoT technologies. Common incentives include redeemable points, discounts at local businesses, coupons for sustainable products, and even cash rewards. While some programs are operated by municipalities or waste management authorities, others are spearheaded by private companies, nonprofit organizations, or community groups. Despite differences in implementation, these reward systems share a common goal of motivating individuals to recycle, reduce waste generation, and engage in environmentally friendly practices.

The integration of technology in waste management represents a pivotal advancement in addressing the complexities of modern waste disposal challenges. From smart bins equipped with sensors to sophisticated data analytics platforms, technology plays a crucial role in optimizing waste collection, sorting, and recycling processes. Mobile applications offer users convenient access to information about nearby recycling facilities, collection schedules, and reward programs, enhancing public engagement and participation. Furthermore, IoT devices enable real-time monitoring of waste bins' fill levels, facilitating more efficient route planning for collection vehicles and minimizing unnecessary trips. Machine learning algorithms and artificial intelligence algorithms are also being employed to improve waste sorting accuracy and streamline recycling operations. By harnessing the power of technology, waste management stakeholders can unlock new opportunities for innovation, efficiency, and sustainability in waste management practices, ultimately contributing to a cleaner and healthier environment for present and future generations. This research paper seeks to explore the diverse applications and implications of technological integration in waste management, examining its potential to revolutionize the way we perceive and manage waste in the modern era.

Incentivized waste management programs offer numerous benefits, promoting environmental stewardship and community involvement while also driving economic advantages. These initiatives encourage responsible waste disposal, leading to reduced disposal volumes and enhanced recycling rates, thus yielding cost savings. Furthermore, they spur local economic growth by supporting small businesses, fostering innovation in waste management, and creating job opportunities in sustainable industries. Overall, these programs highlight the diverse benefits of incentivized waste management, showcasing their potential to instigate positive change at both local and global levels. Behavioral psychology provides critical insights into waste disposal habits, uncovering cognitive biases, social norms, and motivational drivers. These insights are essential for designing effective incentivized waste management programs that align with individuals' intrinsic motivations. By understanding psychological mechanisms, policymakers can craft interventions that promote responsible behavior and foster sustainable practices, bridging the gap between psychology and waste management for impactful strategies.

Proper waste disposal is vital for mitigating pollution, conserving resources, and protecting ecosystems. It prevents contamination of soil, water, and air, safeguarding human health and biodiversity. Methods like recycling and composting reduce landfill burden, cut greenhouse gas emissions, and promote resource recovery, fostering a sustainable circular economy. Recognizing these environmental benefits is crucial for advocating sustainable waste management and building resilient societies.

Ethical considerations are crucial in reward-based waste management, especially regarding equity, privacy, and fairness. Programs must ensure equitable rewards, considering socioeconomic differences, and respect privacy when using personal data. Long-term societal impacts, such as reinforcing consumerism or widening social disparities, need careful evaluation. By addressing these ethical concerns, we can design programs that prioritize justice, transparency, and individual autonomy, ensuring ethical decision-making in incentivized waste management initiatives. Future directions in incentivized waste management include integrating blockchain and AI for efficiency, and conducting longitudinal studies to evaluate long-term effectiveness. Research should address equity concerns and ensure benefits for all members of society. By embracing interdisciplinary approaches, future research can drive transformative change in waste management, guiding policy interventions for a sustainable and equitable future.

2. LITERATURE SURVEY

The Smart Waste Disposal System (SWDS), based on the Internet of Things (IoT), is the subject of this study. The system uses real-time garbage level monitoring to optimize collection schedules. Mobile apps make it easier to engage the public and communicate with collectors. Additionally, the SWDS uses predictive analytics to forecast waste generation patterns, which could lead to more efficient resource allocation [1].

This study looks at employing a Raspberry Pi 4 for real-time data processing and decision-making in a waste segregation system. The emphasis is on increasing the efficiency and accuracy of segregating various waste types. The Raspberry Pi 4 serves as the system's brain, processing sensor data and potentially regulating systems for automated garbage sorting [2].

Using ESP32 microcontrollers, an automated smart trash can is investigated in this research. The system has many features, including automated reporting, real-time fill level monitoring, and autonomous waste segregation. Notably, it determines trash type and level by integrating many sensing technologies—possibly incorporating weight or ultrasonic sensors. The study also emphasizes the use of wireless communication protocols, which allow data transfer for remote control and monitoring [3].

The importance of ultrasonic sensors in an Internet of Things-based smart city waste management system is highlighted in this study. When it comes to precisely determining the amount of trash in the dustbins, ultrasonic sensors are necessary. This maximizes the effectiveness of waste management by enabling the timely sending of warnings for trash pickup. By providing real-time data gathering, processing, and potential display of garbage levels across the city, the integration with IoT platforms improves the system even more [4].

Building on the notion of ultrasonic sensors, this study investigates a smart dustbin model for waste management and demonstrates the efficiency of ultrasonics in monitoring garbage levels. However, the purpose of this study is to investigate the influence of this data on resource allocation. By connecting with IoT systems, the system may optimize collection routes and resource allocation based on real-time trash level data, possibly saving money and increasing waste management efficiency [5].

IoT in addressing issues with solid waste management. It suggests using sensor-equipped smart dustbins to track fill levels in real time. Furthermore, GPS modules offer useful position-tracking information. This set of characteristics, made possible by the IoT, enables more efficient trash management and better collection routes. According to the report, the IoT has the ability to completely transform waste management by giving decision-makers access to real-time data [6].

This research uses Arduino devices to investigate creative waste management techniques that are in line with the Swachh Bharat Mission. The study demonstrates how successful this strategy is, especially when using ultrasonic sensors to track fill levels in real time. GSM modules also

provide communication capabilities, which may help with alarms or data transmission for more effective data collection. This study demonstrates how Arduino-based systems may help develop more effective and clean waste management techniques [7].

The particular problem of waste management in highly populated places is addressed in this study. It suggests utilizing smart trash cans with sensors and microcontrollers as a solution. Real-time trash level monitoring is made possible by the system's utilization of Internet of Things (IoT) technology. In high-density areas, this real-time data might be critical for streamlining collection schedules and guaranteeing effective waste management [8].

A reward-based smart waste disposal System is the unique waste management strategy examined in this study. Smart bins with RFID technology are used by the system to enable user identification. Mobile apps are essential because they may provide users with real-time information and allow them to engage with the system. According to the research, reward systems may be used to encourage appropriate garbage disposal, which might encourage beneficial user behavior and possibly result in a cleaner environment [9].

A digital scale system was created particularly for effective non-organic trash management. It uses Arduino, ESP32 microcontrollers, and load cells to accurately measure weight. The presence of the Hx711 module enables accurate weight measurements. Notably, the system enables real-time data transfer and computerized record-keeping, which might benefit waste management analysis and invoicing operations. The study complements local efforts and suggests possible areas for development, such as integrating with waste banks and further optimizing load cell accuracy for more trustworthy data collection [10].

By examining current waste disposal management methods, this research supports the Swachh Bharat Mission. Systems that make use of different sensor technologies and Arduino microcontrollers are the main emphasis. Notably, the study looks at features intended to deal with particular issues like animal interference and garbage overflow. Through an analysis of current approaches, this study offers insightful information on practical approaches to address these prevalent waste management problems [11]

3. METHODOLOGY

3.1. Modules

3.1.1 Raspberry Pi and Pi Camera



Fig 1: Raspberry Pi

The Raspberry Pi acts as the central processing unit for our waste management system, orchestrating the entire process from waste detection to data analysis. Paired with the Pi Camera module, the Raspberry Pi captures images of waste items deposited in the bin. These images are pivotal inputs for our image processing pipeline. Utilizing the YOLO (You Only Look Once) algorithm, the Raspberry Pi processes these images in real-time, enabling rapid detection and classification of waste objects. This integration of the Raspberry Pi and Pi Camera forms the cornerstone of our system's image processing capabilities, facilitating efficient and accurate waste identification.

3.1.2 Ultrasonic Sensor Module



Fig 2: Ultrasonic Sensor Module

The ultrasonic sensor module serves as a critical component for monitoring the level of waste within the bin. Positioned strategically inside the bin, the ultrasonic sensor emits ultrasonic waves and measures the time taken for these waves to bounce back after hitting the surface of the waste. By analyzing this data, the module accurately determines the distance to the waste surface, providing real-time feedback on the bin's fill level. This information is invaluable for waste management decisions, allowing for timely interventions such as waste collection or bin emptying. Despite the shift to YOLO for image processing, the role of the ultrasonic sensor module remains unchanged, offering reliable and accurate measurements to optimize waste management practices.

3.1.3 Load Cell Module

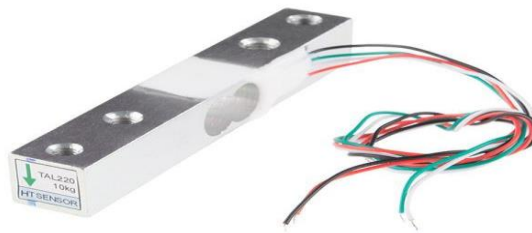


Fig 3: Load Cell Module

The load cell module plays a crucial role in accurately measuring the weight of waste items deposited in the bin. Comprising a load cell and strain gauges, this module detects the deformation caused by the weight of the waste and converts it into electrical signals. By calibrating the load cell, we ensure precise weight measurements, providing valuable data for waste management optimization. Although the image processing approach has shifted to YOLO, the load cell module's function remains unchanged, offering reliable and accurate weight measurements to complement object detection results.

3.1.4 Display Module

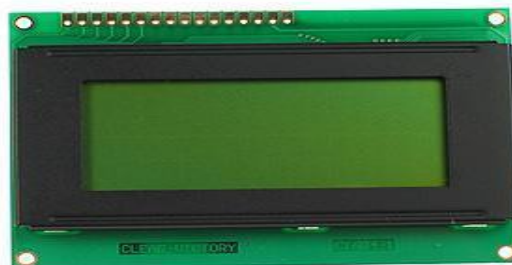


Fig 4: Display

The LCD display module, integrated with our waste management system, serves as a crucial interface, connecting users with real-time feedback and interaction capabilities. Paired with the Raspberry Pi, this 16x4 LCD display presents essential information to users, including detected waste types, bin fill levels, and weight measurements. Beyond mere data presentation, the LCD display module empowers users to interact with the system, providing avenues for feedback and accessing instructions on proper waste disposal practices. Despite the shift to YOLO for image processing, the LCD display module maintains its pivotal role in enhancing user experience and

fostering responsible waste management behaviors. With its clear visual representation and interactive features, the LCD display module ensures that users remain engaged and informed throughout their waste disposal interactions, contributing to a more efficient and sustainable waste management system.

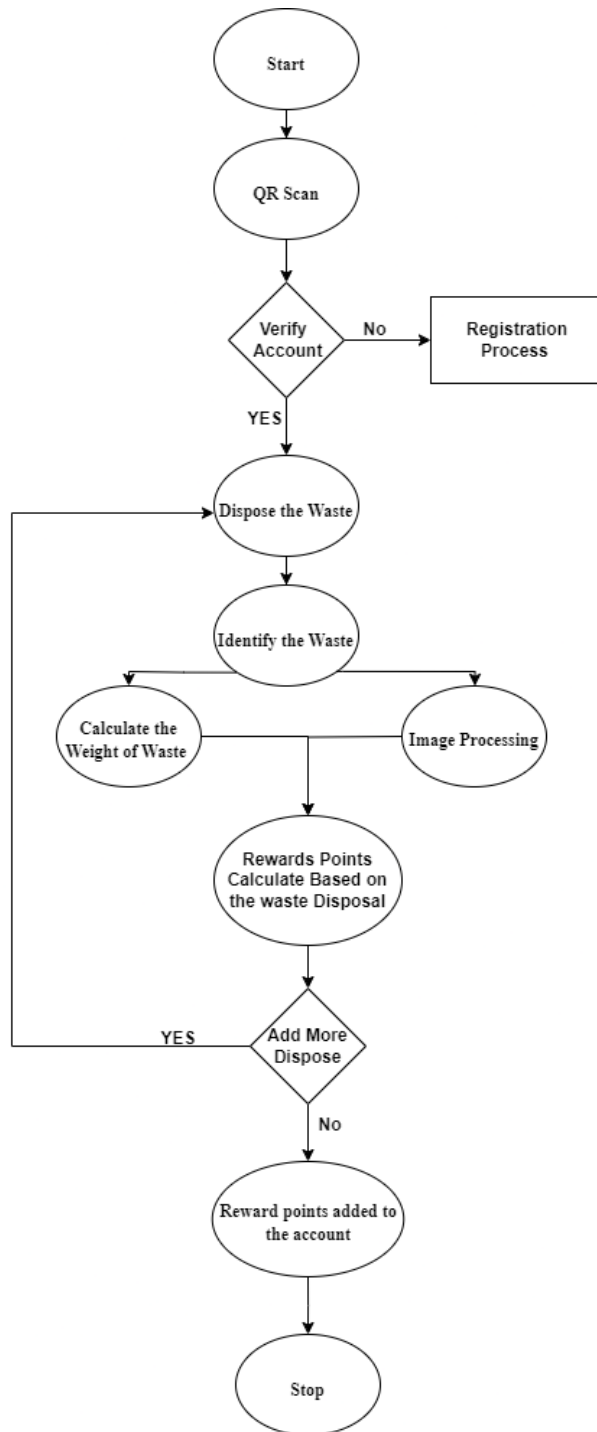


Fig 5 : System Architecture

3.2. User Application

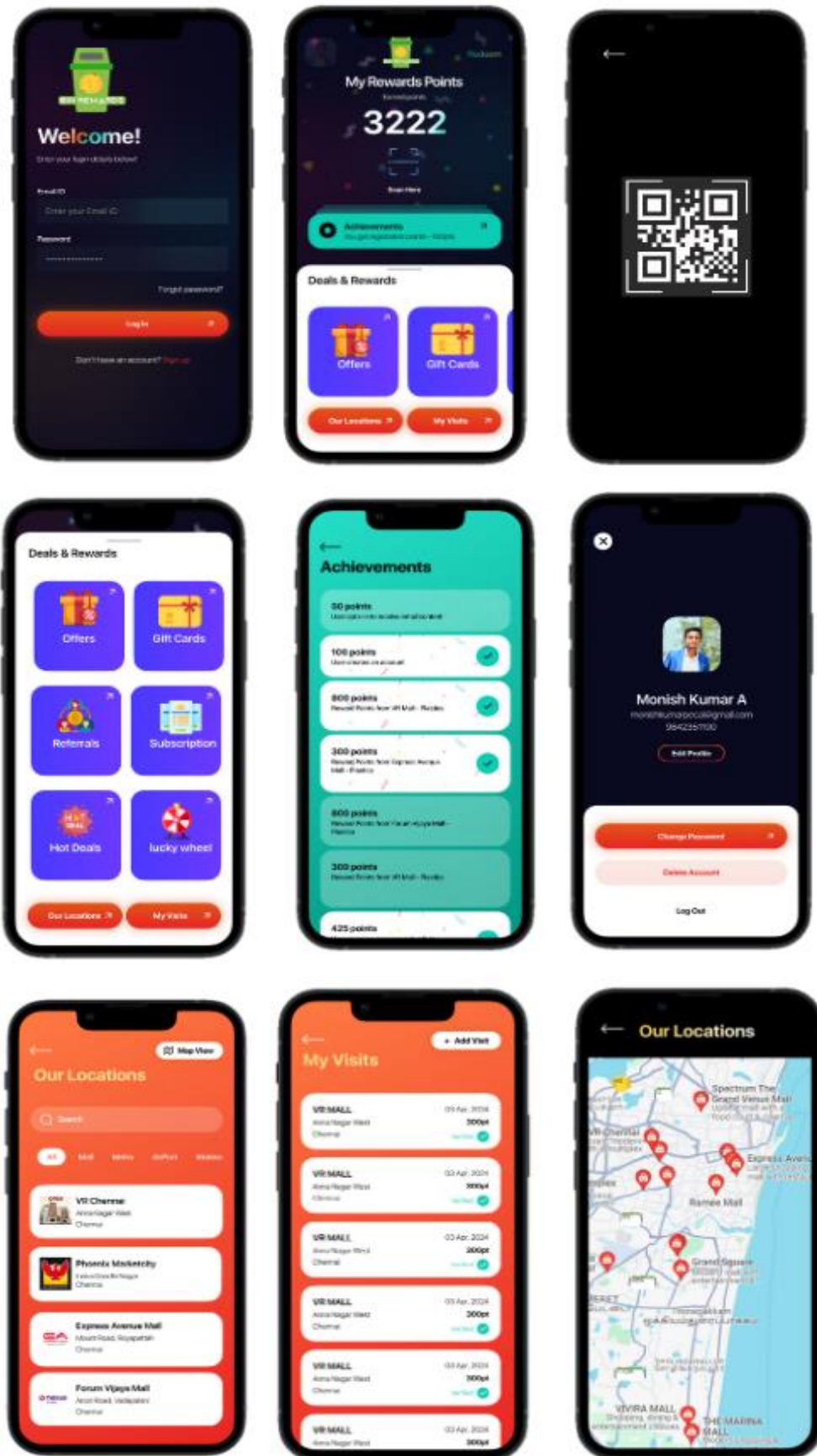


Fig 6: Application Interface

3.3 Methodology

3.3.1 Data Collection

Data collection is a crucial aspect of our waste management system, facilitating the optimization of waste disposal processes and enhancing user engagement. To ensure the system operates efficiently, we collect essential user information such as name, mobile number, and location. The collection of this data is paramount for account creation and providing personalized services tailored to individual user needs. Furthermore, users have the option to add a photo to their profile, enhancing user identification and further enriching their experience with our system. We assure our users that their data will be highly secure, and stringent measures will be in place to safeguard their privacy and confidentiality.

3.3.2 User Interface Design

The user interface design of our waste management system focuses on providing a seamless and intuitive experience for users across different platforms. Through careful consideration of user needs and preferences, we have developed a visually appealing interface that simplifies the waste disposal process. Key features include clear navigation menus, interactive elements, and informative feedback to guide users effectively. By prioritizing usability and accessibility, our user interface design enhances user engagement and encourages responsible waste management behaviors.

3.3.3 QR Code Integration

The integration of QR codes into our waste management system represents a pivotal aspect of user interaction and data management. Each dustbin is equipped with a unique QR code, enabling users to effortlessly access their accounts and engage in waste disposal activities through the "REF" app. This seamless integration not only enhances user convenience but also enables real-time data capture and analysis, thereby supporting the optimization of waste management processes. By leveraging QR code technology, we aim to streamline user experiences and promote sustainable waste management practices with ease and efficiency.

3.3.4 User Registration

User registration serves as the gateway for individuals to engage with our waste management system effectively. Through a seamless registration process, users can create accounts on the "REF" app, providing essential details such as their name, email, and password. Our system prioritizes the security and privacy of user data, ensuring that sensitive information is securely stored and protected from unauthorized access. Upon completing the registration process, users unlock a range of features and benefits, including waste disposal tracking, reward points accumulation, and access to personalized rewards. We emphasize our commitment to providing a user-friendly registration experience that empowers individuals to participate actively in sustainable waste management practices.

3.3.5 Waste Disposal Tracking

Waste disposal tracking is a critical component of our waste management system, empowering users to monitor and manage their waste disposal activities with ease and precision. Through the utilization of advanced sensors and sophisticated data analytics techniques, our system captures real-time data on the frequency and volume of waste deposited into designated bins. This comprehensive tracking mechanism not only provides users with insights into their waste generation habits but also enables data-driven decision-making for optimizing waste management processes. By leveraging waste disposal tracking capabilities, users play an active role in environmental sustainability initiatives while earning rewards for their contributions. We emphasize our commitment to providing transparent and accurate waste disposal tracking mechanisms that empower users to make informed choices and actively participate in sustainable waste management practices.

3.3.6 Reward Points Calculation

Reward points calculation lies at the heart of our waste management system, driving user

engagement and incentivizing responsible waste disposal behaviors. The calculation process takes into account several factors, including the type and quantity of waste deposited into the bins. Each type of waste is assigned a specific point value, reflecting its environmental impact and recyclability. Users may also earn bonus points for consistent participation or for taking part in special promotions and initiatives. These reward points accumulate in the user's account over time, offering tangible incentives for sustained engagement and proactive environmental stewardship. We emphasize our commitment to transparency and fairness in reward points calculation, ensuring that users are duly rewarded for their contributions to waste reduction and environmental conservation.

3.3.7 Reward Options Management

Reward options management is an integral component of our waste management system, empowering users with choice and flexibility in redeeming their accumulated reward points. Our platform offers a diverse range of reward options to cater to the varied preferences of our user base. From converting reward points into monetary value to enjoying discounts on products and services, users have the freedom to select the reward option that best aligns with their interests and lifestyle. Additionally, our system extends beyond traditional rewards by offering coupons for local businesses and eco-friendly merchandise, providing users with meaningful incentives to engage in sustainable waste management practices. By prioritizing user satisfaction and personalization in reward options management, we aim to foster long-term engagement and promote positive environmental outcomes.

3.3.8 User Account Management

Effective user account management lies at the core of our waste management system, facilitating seamless access and personalized experiences for our users. Through the intuitive interface of the "REF" app, users can effortlessly create, update, and manage their accounts, ensuring the accuracy and relevance of their personal information. Our commitment to user privacy and data security is reflected in the implementation of robust encryption techniques and secure authentication protocols, safeguarding sensitive user data against unauthorized access. Furthermore, user account management serves as a conduit for transparent communication and engagement, enabling users to stay informed about rewards, promotions, and system updates. We prioritize user empowerment and satisfaction through efficient and user-centric account management functionalities, fostering a strong sense of trust and loyalty within our user community.

3.4 Algorithm:

Step 1: Design System Architecture

- Define system components, including hardware (e.g., Raspberry Pi, sensors) and software (e.g., user interface, backend).
- Determine data flow and communication protocols between components for seamless integration.

Step 2: Develop User Interface

- Design intuitive user interfaces for the "REF" app and web platform to facilitate user interaction.
- Incorporate features for user registration, waste disposal tracking, and reward points management

Step 3: Integrate Hardware Components

- Configure Raspberry Pi with necessary peripherals (e.g., Pi Camera, ultrasonic sensor, load cell) for data acquisition.
- Establish communication between hardware components and backend server for data transmission.

Step 4: Implement Backend Functionality

- Develop backend server to handle user authentication, data storage, and reward points calculation.
- Create APIs for communication between frontend interfaces and backend server.

Step 5: Deploy System

- Deploy the waste management system on appropriate hardware (e.g., Raspberry Pi, cloud server) and software platforms (e.g., app store, web hosting).
- Conduct testing to ensure system functionality, security, and scalability.

Step 6: Launch User Engagement Initiatives

- Promote the waste management system through marketing campaigns, educational materials, and community outreach.
- Encourage user participation through incentives, rewards, and gamification elements.

Step 7: Monitor and Evaluate

- Continuously monitor system performance, user feedback, and waste management metrics.
- Evaluate the effectiveness of user engagement initiatives and system improvements.

Step 8: Iterate and Improve

- Incorporate user feedback and insights gained from monitoring and evaluation into system enhancements.
- Iteratively improve system functionality, user experience, and environmental impact over time.

4. PSEUDOCODE:

1. Start

2. Function userRegistration():

- Prompt user to create an account
- Collect user information (name, email, password)
- Store user data securely in the database

3. Function scanQRCode():

- User scans QR code on designated dustbin
- If user is registered:
 - Display user's name
 - Call addWasteToBin() function
- If user is not registered:
 - Redirect user to registration process

4. Function addWasteToBin():

- Prompt user to dispose of waste into the bin
- Capture image of waste using Pi Camera
- Process image with YOLO algorithm for waste classification
- Calculate reward points based on waste type and quantity
- Update user's account with reward points

5. Function displayRewardOptions():

- Present user with options to redeem reward points
- Options include: monetary value, discounts, coupons, merchandise
- Allow user to select preferred reward option

6. Function updateRewardHistory():

- Update user's reward points history with redeemed rewards
- Store transaction details in the database

7. Function userFeedback():

- Prompt user for feedback on the system
- Gather suggestions for improvement
- Store feedback in the database for future enhancements

8. End

5. CONCLUSION

In conclusion, our research paper outlines a comprehensive approach to incentivizing responsible waste management through the integration of technology, user engagement strategies, and sustainable practices. By harnessing the power of AI-driven algorithms, smart sensors, and user-friendly interfaces, our waste management system not only streamlines waste disposal processes but also empowers individuals to actively participate in environmental conservation efforts. Through the implementation of reward systems and community engagement initiatives, we have demonstrated the potential to foster positive behavioral changes and cultivate a culture of environmental responsibility. As we look to the future, continued innovation and collaboration will be essential in advancing sustainable waste management practices and creating greener, more resilient communities. By embracing emerging technologies, expanding user incentives, and fostering partnerships with stakeholders, we can collectively work towards a more sustainable and environmentally conscious future.

6. FUTURE WORK

1. AI-driven Optimization: Refine AI algorithms for efficient waste collection routes, minimizing costs and environmental impact.
2. Expanded User Rewards: Diversify reward options to include eco-friendly products and local discounts, boosting user engagement.
3. Smart City Integration: Collaborate with smart city initiatives to integrate waste data for holistic urban planning.
4. User Feedback Enhancement: Strengthen user feedback mechanisms for continuous system improvement and user satisfaction.
5. Innovation Research: Conduct ongoing research into cutting-edge waste reduction technologies for future system enhancements.

7. REFERENCE

- [1] D. Alwis, P. Munasinghe, S. Rajapaksha, B. Ranawaka, J. Krishara and W. Tissera, "A Smart Waste Disposal System: To Encourage Proper Waste Disposal," *2022 4th International Conference on Advancements in Computing (ICAC)*, Colombo, Sri Lanka, 2022, pp. 441-446, doi: 10.1109/ICAC57685.2022.10025307.
- [2] E. S. Swankg, M. Kaviyaranan and M. Nithya, "Reward Based Smart Bin with Waste Segregation for Encouraging People in Waste Management System," *2021 4th International Conference on Computing and Communications Technologies (ICCCT)*, Chennai, India, 2021, pp. 38-42, doi: 10.1109/ICCCT53315.2021.9711796
- [3] G. N. Keshava Murthy, A. S, A. K N, Y. R and J. T S, "Automated Smart Dustbin Using ESP32," *2023 International Conference on Recent Advances in Science and Engineering Technology (ICRASET)*, B G NAGARA, India, 2023, pp. 1-5, doi: 10.1109/ICRASET59632.2023.10420276.
- [4] M. Sathyamoorthy, C. N. Vanitha, S. Praveen Raja, A. K. Sharma, B. Sharma and S.

Chowdhury, "Smart City Waste Management System using IOT," *2023 6th International Conference on Information Systems and Computer Networks (ISCON)*, Mathura, India, 2023, pp. 1-6, doi: 10.1109/ISCON57294.2023.10111953.

[5] G. Shubha, V. Dalal, R. T S and R. C E, "Smart Dustbin Model for WasteManagement," *2023 IEEE North Karnataka Subsection Flagship International Conference (NKCon)*, Belagavi, India, 2023, pp. 1-4, doi: 10.1109/NKCon59507.2023.10396474.

[6] G. V. V. S. L. Rupesh, M. S. Advytha, N. B. Prakash, V. Sahu, A. Gupta and S. K. Dargar, "A Smart-Dustbin and Integration of Waste Management System using IoT," *2022 4th International Conference on Inventive Research in Computing Applications (ICIRCA)*, Coimbatore, India, 2022, pp. 393-397, doi: 10.1109/ICIRCA54612.2022.9985021.

[7] S. M. Metagar, F. R. Sayyed and P. Singhvi, "Garbage Management System Using Arduino Device to support Swachh Bharath Mission," *2022 OPJU International Technology Conference on Emerging Technologies for Sustainable Development (OTCON)*, Raigarh, Chhattisgarh, India, 2023, pp. 1-6, doi: 10.1109/OTCON56053.2023.10113921.

[8] S. Pargaian, A. V. Pargaian, D. Verma, V. Sah, N. Pandey and N. Tripathi, "Smart Waste Collection Monitoring System using IoT," *2021 Third International Conference on Inventive Research in Computing Applications (ICIRCA)*, Coimbatore, India, 2021, pp. 11-16, doi: 10.1109/ICIRCA51532.2021.9544982.

[9]M. Abraham, S. Sreeraj, D. Milton, A. A. Yohannan and G. J. L. Paulraj, "Reward based Smart Waste Disposal System using RFID," *2023 International Conference on Sustainable Computing and Data Communication Systems (ICSCDS)*, Erode, India, 2023, pp.1081-1084,doi:10.1109/ICSCDS56580.2023.10104738.

[10]D. Atmajaya, N. Kurniati, W. Astuti, Y. Salim and A. Haris, "Digital Scales System on Non-Organic Waste Types Based on Load Cell and ESP32," *2018 2nd East Indonesia Conference on Computer and Information Technology (EIconCIT)*, Makassar, Indonesia, 2018, pp. 1-4, doi: 10.1109/EIconCIT.2018.8878667.

[11] H. Denicke Solomon, R. Abishek, T. Ramachandra, P. Pavithra and S. Ezhilarasi, "A Garbage Disposal Management System to Support Swachh Bharath Mission," *2022 6th International Conference on Devices, Circuits and Systems (ICDCS)*, Coimbatore, India, 2022, pp. 205-209, doi: 10.1109/ICDCS54290.2022.9780847.